

amlodipine and atorvastatin from amlodipine besylate/ atorvastatin calcium tablets are not significantly different from the bioavailability of amlodipine and atorvastatin administered separately. The bioavailability of amlodipine from amlodipine besylate/ atorvastatin calcium tablets was not affected by food. However, food decreases the rate and extent of absorption of atorvastatin from amlodipine besylate/atorvastatin calcium tablets by approximately 32% and 11%, respectively, as it does with atorvastatin when given alone. LDL-C reduction is similar whether atorvastatin is given with or without food. (Kate McKeage, M. Asif A. Siddiq.2008)

## 1.6 Chemical structures and data

The figures and tables below show the chemical structures and the chemical data of glimepiride, amlodipine and atorvastatin (Fig. 1.1, 1.2, 1.3) and Table 1.1, 1.2. 1.3.

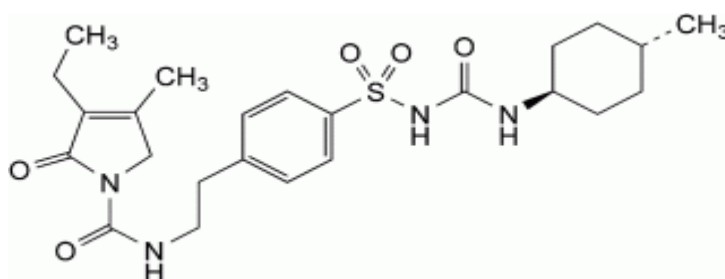


Figure 1.1 Chemical structure of glimepiride

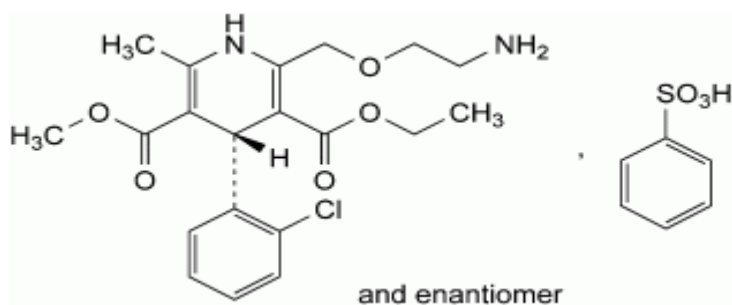


Figure 1.2 Chemical structure of Amlodipine